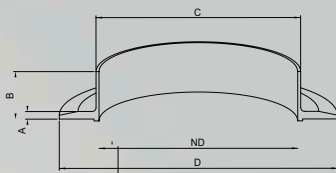




SteriFlange



ND	A	B	C	D
80	8	50	86	145
100	8	50	106	180
150	8	50	156	230
200	8	50	206	280
250	8	50	256	330
300	8	50	306	380
350	10	50	356	450
400	10	50	406	500

SteriPlate

DN 3" - 4" - 6" - 8" - 10"

STAINLESS STEEL ACCESSORIES

SteriFlange

The **SteriFlange** is an interface component for the modular system valves. It has been designed to be welded on pipes or on machines in order to reduce the overall height and for a rapid and ergonomic clenching of the valve. The **SteriFlange** can come with an "O-ring" in silicone (FKM [Viton®], EPDM, PTFE are optional) which renders it airtight. It is in stainless steel EN 1.4404 (AISI 316L). Its height can be tailored to the customer's request. It has a high quality surface finish:

- Ra < 0,8 µm for the parts which are not in contact with the product (satin finish).
- Ra < 0,1 µm for the parts which are in contact with the product (mirror polished).



Clamp

The **Clamp** is a rapid and ergonomic component for connecting valves and or accessories. We have two types of clamps, each with a different tightening element and both metrical or imperial. The Standard clamp is used to assemble and dismantle our SR, CR or DR valves, to clench them to our montage flange or to standard Tri-Clamp. In stainless steel EN 1.4301 (AISI 304), it is very light and easy to clean. The **SteriClamp** is a suitable solution for pharmaceutical use. It has the same advantage of the regular clamp and furthermore: it has an opened-fork lock without any threading which could harm the operator, damage latex gloves, and attract dust making cleaning more difficult. It is in stainless steel EN 1.4301 (AISI 304), it is very light and easy to clean and is closed with a simple gesture of the hand.



SteriPlate

The **SteriPlate** is a cover which is clamped to the valve or the steriflange, to protect them from knocks and scratches.

The **SteriPlate** is provided with an "O-ring" in silicone (optional in FKM [Viton®], EPDM, PTFE) which renders it airtight. It is in stainless steel EN 1.4404 (AISI 316L), easily cleaned and dismantled without risk of damage. It has a high quality surface finish:

- Ra < 0,8 µm for the parts which are not in contact with the product (satin finish).
- Ra < 0,1µm for the parts which are in contact with the product (mirror polished).

